

JANUARY 21 - 25, 2013

For Private Circulation Only

INDEX INDICATORS:

INDICES	CMP*	Previous week**	% CHANGE
BSe SENSEx	20039	19664	+1.91
NSe NIFTy	6064	5951	+1.90
DOW	13596	13488	+0.80
NASDAQ	3137	3126	+0.35
S & P	1481	1472	+0.61
HANGSENG	23602	23264	+1.45
NIKKEI	10913	10802	+1.03
SHANGHAI COMp	2317	2243	+3.30
FTSe	6159	6122	+0.60

* CMP: PRICE AT THE TIME OF MAKING THE REPORT (SOURCE: YAHOO FINANCE / ASA)

**Previous close: Price as per previous Foretelling Future.

1. The **SENSEX** flag was finally hoisted on mount **20K** post a series of attempts. **NIFTY** on the other hand has managed to find ground above the **6000** mark. Gains for the week were to the tune of **2%**.
2. The latter half of the week was filled with surprises as the *Government decided to allow Oil Marketing Companies to tweak diesel prices*. **Inflation** for Dec 2012 came in at **7.18%** its *lowest level in 3 years*, marking three consecutive months of declines, thus offering room for the *RBI to support growth via a rate cut*.
3. The results season that had flagged off on a high note by the IT bellwether **Infosys**, continued to cheer results of **TCS** and **Hcl Tech** as well. **Wipro** saw some reaction post announcements. The **auto** pack on the other hand witnessed mixed results as **Bajaj Auto** was in-line with the street while **Hero Moto** disappointed. Amongst banks, Yes bank and HDFC bank met street expectations.
4. China's economy rebounded in the final quarter of 2012 as **GDP** rose to **7.9%** as against 7.4% in the previous quarter. Thus the world's second largest economy wobbled out of its deepest slowdown since the 2008 global crisis. **Chinese** market now trends above its **200 Day EMA**. **Hong Kong** market rose to **19.5** month highs. Japanese market inched closer to **11000** mark as a second round of monetary expansion was announced by infusion of 10 trillion Yen. Yen thereby retreated against the \$. S Korean market corrected on account of Yen weakness.
5. The European and US markets lacked fresh triggers thereby remaining muted in the course of the week. However, **markets in US** scaled to **fresh 5 year highs**.
6. Yen, post some easing off in the initial part of the week continued its downtrend towards the 90 mark. Euro held ground at 1.33 as \$ index maintained its head below the 80 mark.

Particulars	This week	Previous week	Remarks
FII Cash Market	+3174	+2763	Till Wednesday
FII Derivatives Market	+1142	-400	Till Wednesday
Local Funds Cash market	-566	-627	Till Wednesday
Volumes: Cash Mkt	79198	78219	Till Friday
Volumes: F&O	636830	531044	Till Friday

INDIA VIX		CBOE VIX		PcR MAREKt WIDE		MOST	ACTIVE
CMP (17-01-13)	14.01	CMP (17-01-13)	13.57	CMP (17-01-13)	0.93	CALL:	NIFTY 6100
WEEK'S HIGH:	14.25	WEEK'S HIGH:	13.99	WEEK'S HIGH:	1.05	PUT:	NIFTY 6000
WEEK'S LOW:	13.58	WEEK'S LOW:	13.16	WEEK'S LOW:	0.89	UNDER	RIL
CHANGE: (%)	5.90	CHANGE: (%)	1.57	CHANGE: (%)	(4.12)	LYINGS:	SBI

WE / OUR CLIENTS / OUR RELATIVES MAY HAVE PERSONAL TRADING / INVESTMENT INTEREST IN THE STOCKS MENTIONED HERE IN.

Please Note that our technical calls are totally independent of our fundamental calls.

Additional information with respect to any securities referred to herein will be available upon request.

Sushil Financial Services Private Limited and its connected companies, and their respective directors, Officers and employees (to be collectively known as SFSP), may, from time to time, have a long or short position in the securities mentioned and may sell or buy such securities. SFSP may act upon or make use of information contained herein prior to the publication thereof.

This report is prepared for the exclusive use of Sushil Group clients only and should not be reproduced, recalculated, published in any media, website or otherwise, in any form or manner, in part or as a whole, without the express consent in writing of Sushil Financial Services Private Limited. Any unauthorized use, disclosure or public dissemination of information contained herein is prohibited.

This sheet is for private circulation only and the said document does not constitute an offer to buy or sell any securities mentioned herein. While utmost care has been taken in preparing the above, We claim no responsibility for its accuracy. We shall not be liable for any direct or indirect losses arising from the use thereof and the investors are requested to use the information contained herein at their own risk.

Sushil Financial Services Private Limited

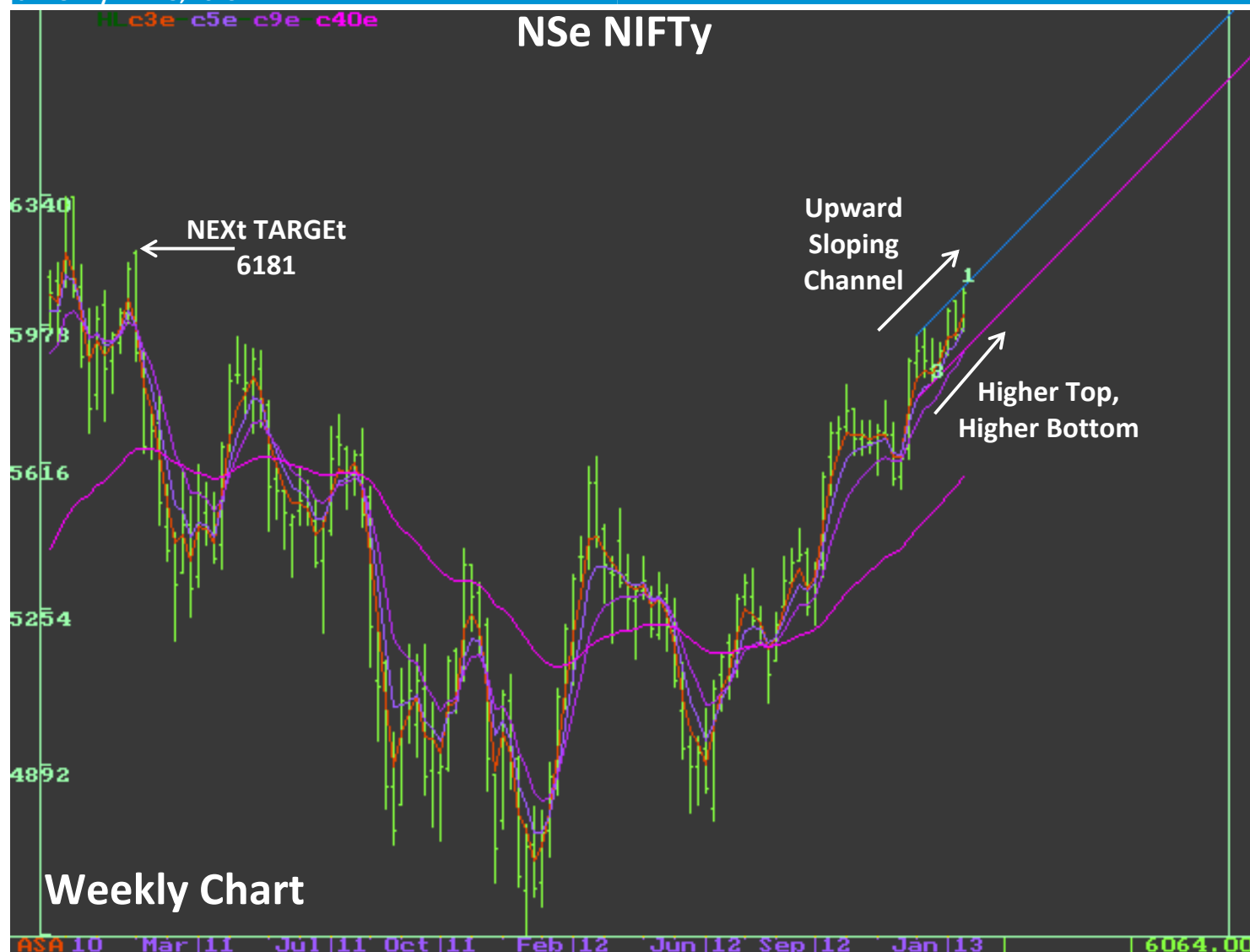
Member: **BSEL**, SEBI Regn.No. INB/F010982338 | **NSEIL**, SEBI Regn.No. INB/F230607435

Tel.: 022-6698 0636 Fax: 022-6698 0606 E-mail: info@sushilfinance.com

JANUARY 21 - 25, 2013

For Private Circulation Only

NSe NIFTy



Weekly Chart

MARKET OUTLOOK:

1. Indices managed to break through the resistance zone of 19856/6042 with SENSEx conquering the 20K mark. Indices are thereby trending in an UPWARD SLOPING CHANNEL, exhibiting formation of HIGHER TOPS and HIGHER BOTTOMS thus paving way for a test of intermediate tops of 20509/6181. Mid Cap stocks however experienced correction.
2. With the results' season entering its 2nd week, the same with the RBI monetary policy meet of Jan 29th would continue to determine the short term trend of the market. US Debt Ceiling and Indian budget would be eyed for the medium term trend. Meanwhile Mid Caps are expected to return to their outperformance journey.

GRId	BsE SENSEx	NsE NIFTy	CNx iT	BANK NIFTy	CNx 500
CMP	20039	6064	6799	12680	4844
200 DAY EMA	18304	5553	6135	11176	4416
200 DAY SMA	17908	5435	6062	10852	4315
TURNING POINT	19982	6042	6800	12640	4836
RESISTANCE	20509	6181	7053	13304	4988
SUPPORT	19612	5949	6496	12078	4688

THOUGHT OF THE WEEK: "THE FOOL DO TH THINK HE IS WISE, BUT THE WISE MAN KNOWS HIMSELF TO BE A FOOL"

AMEET DOSSHI : amit.doshi@sushilfinance.com

RANAK MERCHANT: ranak.merchant@sushilfinance.com

WE / OUR CLIENTS / OUR RELATIVES MAY HAVE PERSONAL TRADING / INVESTMENT INTEREST IN THE STOCKS MENTIONED HERE IN.

Please Note that our technical calls are totally independent of our fundamental calls.

Additional information with respect to any securities referred to herein will be available upon request.

Sushil Financial Services Private Limited and its connected companies, and their respective directors, Officers and employees (to be collectively known as SFSP), may, from time to time, have a long or short position in the securities mentioned and may sell or buy such securities. SFSP may act upon or make use of information contained herein prior to the publication thereof.

This report is prepared for the exclusive use of Sushil Group clients only and should not be reproduced, recalculated, published in any media, website or otherwise, in any form or manner, in part or as a whole, without the express consent in writing of Sushil Financial Services Private Limited. Any unauthorized use, disclosure or public dissemination of information contained herein is prohibited.

This sheet is for private circulation only and the said document does not constitute an offer to buy or sell any securities mentioned herein. While utmost care has been taken in preparing the above, We claim no responsibility for its accuracy. We shall not be liable for any direct or indirect losses arising from the use thereof and the investors are requested to use the information contained herein at their own risk.

Sushil Financial Services Private Limited

Member: BSEL, SEBI Regn.No. INB/F010982338 | NSEIL, SEBI Regn.No. INB/F230607435

Tel.: 022-6698 0636 Fax: 022-6698 0606 E-mail: info@sushilfinance.com